

WELCOME TO AMIBLU INDUSTRIAL EUROPE



TRUE PROFESSIONALS
WORKING TOGETHER

AMIBLU INDUSTRIAL

Welcome to Amiblu Industrial Europe. Notice the name - this is our department for turnkey Industrial projects. Amiblu is not only delivering piping products - we are also a devoted partner to the small, medium and large EPC contractors worldwide.

OUR VISION

Amiblu Industrial Europe's vision is to follow our European EPC clients into the world, where we utilize our family network of manufacturing plants, trade offices, engineers and construction labour, to deliver turnkey projects on industrial water applications.

WITH THIS LEVERAGE, WE BELIEVE THAT WE CAN BE THE BEST EPC PARTNER - IN THE WORLD.

DELIVERING **TURNKEY** INFRASTRUCTURE PROJECTS **WORLDWIDE**

Amiblu Industrial Europe is Amiblu's European division that supports the European EPCs. They follow projects and provide local services all over the world. The division operates by leveraging local production assets and partners to provide fast and effective customer service wherever it is needed. Thinking globally yet acting locally is more relevant than ever to our EPC partners.

Amiblu Industrial's European headquarters is located in Barcelona. From here it coordinates and supports the industrial projects originating from European EPCs as well as direct enquiries from all over the world.

We offer our clients the possibility of contracting a complete project execution service. This includes the initial study, the design of the pipes and fittings, manufacture, quality control of the finished product, shipment and site installation. We support all the way from first enquiry to site acceptance of the contracted work.

AMIBLU INDUSTRIAL EUROPE'S OFFER IS TRULY TURNKEY.





FROM START TO FINISH

At Amiblu, we know what a turnkey project encompasses. We offer a complete project execution service that include the initial study, the design of the pipes and fittings, the manufacture, quality control of the finished product, shipment and site installation, right up to site acceptance of the contracted work.

AMIBLU INDUSTRIAL EUROPE - HERE TO SERVE!

WORLDWIDE NETWORK



Our Amiblu network is worldwide!

Amiblu has more than 20 manufacturing plants worldwide - fully owned, joint ventures and licensees. In addition - Amiblu has sales offices in all parts of the world. This global presence gives us the opportunity to provide support to EPC's on their projects worldwide.

ENGINEERING



We come to you to help you out

A good project always starts with clever engineering. We have the best engineering resources in the world - we take it even further. We have launched the Amiblu Fast Track concept: An engineer from us goes to your office and stays there, helping you out, until you have the engineering solution that you need. We provide you the engineering you need!

LOGISTICS & PROCUREMENT



We get you the best deals for you

We get you the best deals, because we manufacture our own pipes. We have offices all over the world. We have sub-suppliers worldwide.

Amiblu have ships on sea and lorries on the road at all times. We are experts on logistics, not only in the western hemisphere. Our worldwide presence includes 5 continents of the world.

QUALITY ASSURANCE



When we say "we have a certificate", we have it

Amiblu has the largest GRP piping laboratory in the world. It is certified according to test 190 by Norwegian Accreditation. When we say we have a certificate - we have it. When the auditors come - we are prepared. For you, that means no negative surprising events - before, during or after installation is done!

ON SITE MANAGEMENT & ASSEMBLY



We always put the best team on every particular job

Our project managers are not only carefully selected and educated, they are also the most experienced. International work sites demands skills handling different cultures, work ethics, tools and climates. We send our field managers anywhere in the world, to oversee pipe installation, lamination, valves, subaqueous installations - and all that you need to assemble the project on time.

COMMISSIONING



Only safe and sophisticated commissioning

Our commissioning services ensure that the applications have a controlled startup. With sophisticated equipment like ultrasonic testing, pressure testing, RFID, we literally go in depth on materials, valves and supports - reading out data about the performance and long term stability. This commissioning service is there to ensure the success of the finished product.

OUR **WORLDWIDE NETWORK** IS YOURS

Amiblu Industrial Europe has a network of more than 20 manufacturing plants worldwide - fully owned, joint ventures and licensees. In addition - Amiblu has sales offices in all parts of the world. This global presence gives us the opportunity to provide support to European EPC's on their projects worldwide.



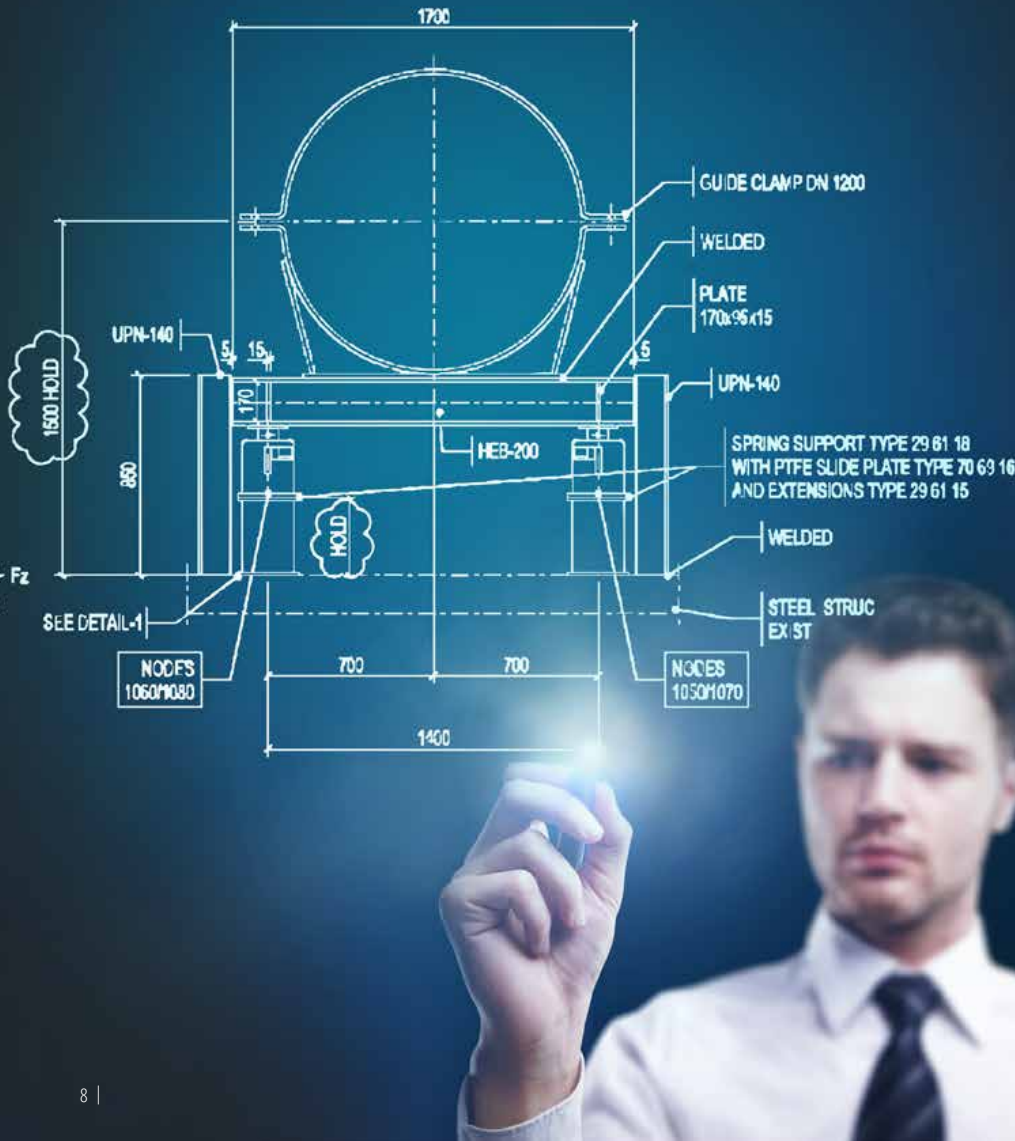
Amiblu offer European EPC clients a network that offers a multitude of services they need on location. Amiblu provides local customers throughout the world with pipe solutions for industrial, water, sewage, gas, and oil applications. In addition, the Group provides pipe technologies, water management services and building materials of superior quality and value. The company has a convincing history of long-term growth and profitability and a competitive position, thanks to the commitment of its customers, staff and labour force.

Faced with the challenges of globalisation, Amiblu has expanded its international presence in recent years. A multicultural management team with a shared vision guarantees a diverse and adapted portfolio. Our customers are serviced by many local sales organisations worldwide.

Therefore, we can offer European EPC's the best services, wherever their projects may be located in the world.

ENGINEERING

ALL GREAT PROJECTS START WITH
CLEVER DESIGNS



THE FAST TRACK CONCEPT

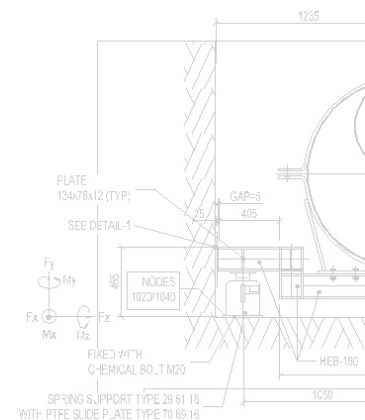
An engineer from us goes to your office and stays there, helping you out, until you have the engineering solution that you need.

**Amiblu Industrial
Europe's Engineering
Services Include**

- Stress Analysis
- Surge Analysis
- Standard Verification
- Technical Spec
- Support Design Primary & Secondary
- Special Design
- And much more!

With over 40 years' experience in turnkey projects, we have tailored our service to the requirements of today's engineering companies. Tight timeframes have become a way of life to the Industrial world. This is particularly true in the early stages of a project where detailed engineering support is required before we can even begin manufacturing the pipes and fittings. With the aim of improving lead times, our "Fast Track Concept"

was born. This involves sending highly qualified engineers to our clients' offices to resolve any issues and ensure we meet our customers' deadline requirements. Given the exacting details essential before manufacturing can begin this has become a real differentiator and is highly appreciated by our clients. This service ensures that the engineering process is not a bottleneck to the project and that the installation is right first time.

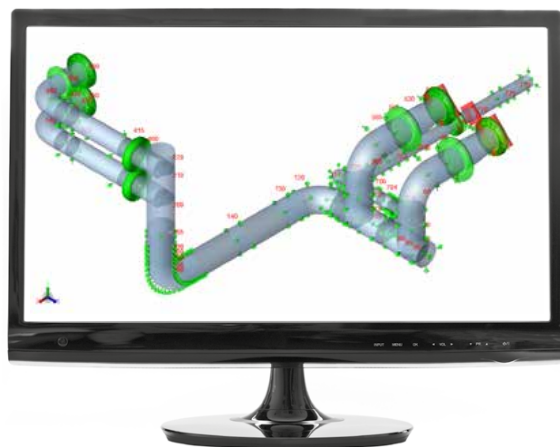


ENGINEERING

STRESS ANALYSIS: DO YOU REALLY NEED CONCRETE?

As most engineers know, when changing the routing of a pipeline concrete thrust blocks are often required to restrain and stabilize the pipes around bends. When it comes to large diameter pipes, these concrete blocks are substantial in size, resulting in significant cost in civil works.

At Amiblu we are able to construct pipelines without using thrust blocks. We do the necessary analysis and develop bespoke system solutions for each project. This saves substantial costs in civil works and concrete materials.



No concrete means less installation costs

Amiblu does the necessary analysis, and tailor make the design of pipes and fittings for each individual project.

Our specially designed butt wrap joints and locked REKA couplings ensure that the installation is fast and economical. REKA key locked couplings offer reduced installation times compared with butt wrap joints.

Whilst industrial plants are being designed there are often unforeseen resulting in an EPC needing fast modifications to the initial design. The pipeline must often take a different path in order to accommodate changes. For many EPCs, such situations come at great expense, since they most often involve substantial

civil works and concrete. At Amiblu, however, we are able to redesign the pipeline using stress analysis and tailor designed pipes and couplings.

This often avoids large unforeseen civil works with all the costs and delays these imply.

At Amiblu we are able to redesign the pipeline using stress analysis and tailor designed pipes and couplings.

That often prevents massive unexpected civil works.

Photo: From Amiblu Industrial Europe project site in Wilton.

ALL GREAT PROJECTS
START WITH
CLEVER DESIGN



GRP bends and pipes connected to ductile iron turbines in the energy recovery facility at Wilton Power Station in England. The solution will convert 127 335 tons of CO₂ into energy every year - for the use in households in the UK.
Photo: Amiblu Industrial Europe

GETTING THINGS IN PLACE - ON TIME

In each of our factories, we have logistics experts who are capable of resolving the most complicated of shipment issues, whether challenges are complexity of the fabricated pieces or the site being located in almost uncharted territory.

Amiblu Industrial Europe Project, Ensenada, Mexico in 2016



LOGISTICS & PROCUREMENT

Amiblu Industrial Europe have ships on sea and lorries on the road at all times. Our trade and logistics services is a worldwide network spanning 5 continents of the world.

At Amiblu, we know what a turnkey project encompasses. Our activities are not just limited to the manufacture of pipes and fittings, we know that our materials often must be shipped and delivered to inhospitable hard to reach places. In each of our factories we have logistics experts who are capable of resolving the most complicated of shipment issues, whether challenges are complexity of the fabricated pieces or the site being located in practically

uncharted territory. Shipping containers, chartering ships and shipment by air – all of these fields of expertise are routine work for us.

We also supply other elements of the pipeline, such as metal supports, valves, and actuators. Our engineering teams are able to take on the responsibility for the design, supply and installation of all of these elements.



AMIBLU INDUSTRIAL EUROPE LOGISTICS SERVICES SUPPLY

- International shipment documentation
- Transportation on sea, road, air and railways
- And much more!

AMIBLU INDUSTRIAL EUROPE PROCUREMENT SERVICES SUPPLY

- Metal Supports
- Valves
- Actuators
- And much more!



Shipment of Flowtite Pipes by Amiblu



QUALITY ASSURANCE

At Amiblu we know what quality is a given. As the world's largest GRP pipe technology supplier we ensure process and control at every stage. Raw material approval and testing, process control, storage control, loading and shipping controls, installation support and extensive tests to ensure durability of the finished product.

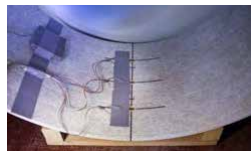
Amiblu technology is the most extensively qualified and used GRP pipe technology today and we offer an unrivalled system in terms of certification and approvals. Our technology centre in Norway is constantly researching new raw materials and developing new systems ensuring we continue to offer customers unrivalled performance and value.

When European EPCs or industrial leaders consider pipe system providers they will face a wide choice of local and international organisations. Local service is key but entrusting projects to local full service companies may

mean exposure to design, quality and engineering that does not meet expected levels. This reduces efficiency, lifetime and potentially even safety factors. We leverage our scale to provide the best technology and service possible whilst still offering competitive installed costs.

In competitive tendering it is all too easy to compromise supplier choice gaining very small initial savings which are rapidly offset by unforeseen delays and costs. How can the real cost and risk of a pipe that has been badly designed by a manufacturer who is not capable of providing even the minimum long-term tests be quantified?

Amiblu Industrial Europe's piping products undergo massive testing to ensure pressure tolerance, long term properties, chemical resistance and much more, in addition to all tests according to the standards.



Amiblu Technology Laboratory in Norway

Amiblu



ACCREDITATION DOCUMENT

TEST 190

Flowtite Technology AS, R&D Lab.

P.O. Box 2059, 3202 Sandefjord, Norway

The scope of accreditation is in accordance with the specifications on the following pages of the document.

The accreditation was initially granted 03.09.2004. The accreditation is given according to "Law on the free exchange of goods in the European Economic Area" of 1994/2002. The organisation complies with the requirements in NS-EN ISO/IEC 17025:2005.

The accreditation requires regular surveillance, and is valid until 17.12.2020. The decision of accreditation made by Norwegian Accreditation implies that the organisation has been found to fulfil the requirements for accreditation within the scope. The organisation itself is responsible for the results of performed measurements.

The accreditation certificate issued by Norwegian Accreditation confirming the certification of the laboratory in Norway.

THE BEST TEAM FOR EACH JOB

ASHUGANI POWER PLANT

Fields workers from Amiblu Industrial Europe mounting GRP fittings at Ashugani Power Station Ltd. The application is expected to deliver 380 megawatt per hour, providing power to thousands of people in Bangladesh. Photo: Amianitit Industrial Europe

Amiblu Industrial Europe's project, Ashuganj, Bangladesh, 2016



ASSEMBLY

Amiblu Industrial Europe's project managers are not only carefully selected and educated, they are also the most experienced, including an expert installation team, which can be sent anywhere in the world to lead the necessary processes and procedures for the most complex pipe installation on the most demanding sites.

Amiblu Industrial Europe's Assembly Services provide:

- Project management
- Hiring of nonspecialized personell
- Site support
- Training
- And much more!



Photo: From Amiblu Industrial Europe's project in Ashuganj, Bangladesh, 2016



Photo: Amiblu installation site in Saudi Arabia

Integrating the functions on site to deliver projects on time and right first time is a critical success factor. All site operations in GRP/GRE require experts who are able to work with the materials and installation elements in a reliable, safe and environmentally friendly way.

Amiblu has an expert installation team, which can be sent anywhere

in the world to lead the necessary processes and procedures for the most complex pipe installation on the most demanding of sites.

The hiring of non-specialized personnel close to the site ensures that the installation costs is kept to a minimum for each project whilst quality and control is not compromised.

The best installation teams are prepared for the unexpected. Amiblu has an expert installation team, which can be sent anywhere in the world to lead the necessary processes.

FOR US COMMISSIONING IS MORE THAN JUST TURNING ON THE VALVE

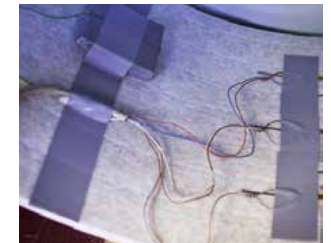
GRP and GRE piping solution provided by Amiblu Industrial Europe to the Los Mina PowerPlant in the Dominican Republic. It allows the two gas turbines to add 114 Megawatt hours to the existing cycle.

Photo: Amiblu Industrial Europe



SAFE AND SOPHISTICATED COMMISSIONING

Amiblu make commissioning something more than just turning on the power switch – utilizing sophisticated equipment like ultrasonic testing, pressure testing, RFID, and more to make plant start in a safe way, and so that any problems may be solved in a professional manner.



Commissioning is one of the most critical phases of a project. There is no longer any time to react, the installation must be handed over without delay, and all the elements must be tested and accepted by the relevant bodies. Amiblu has the most technologically advanced means to ensure an optimum result in this phase, fulfilling all of the client's expectations.

At Amiblu, this process begins from the first day that we start work on the project, reporting all of our activities to the experienced project manager. A project manager is always an exclusively assigned resource to projects that Amiblu undertakes.

This foresight and the availability of high-level human and material resources enables us to detect and solve any anomaly before it escalates.

Amiblu Industrial Europe

Commissioning Services include:

- Ultrasonic testing
- RFID
- Pressure testing
- Deflection testing
- And much more!

MANY OF AMIBLU'S PROJECTS ARE THE WORLD'S LARGEST OF ITS KIND

50 years' experience, 35 production lines around the world and a team of over 3000 people make Amiblu the leading manufacturer within this sector.

Amiblu pioneered the use of composite materials in even the most critical of lines in power plants, water treatment plants, chemical plants and many more. Today composites have become

the material of choice in many such applications. The complex design and correct installation of our pipes usually ensure that they have greater durability than the plant itself, this is why many of the world's leading industrial companies insist on Amiblu technology in their installations.

For these reasons, Amiblu is active

in the sectors that require advanced technological solutions: sewage networks, drinking water treatment plants, water supply networks, pressure pipelines, irrigation networks, wastewater treatment plants, power plants, desalination plants, firewater networks, industry and many more.

"The experience such projects give, is an asset that Amiblu Industrial Europe offers European EPC's"

Amiblu Industrial Europe is currently working on large-scale projects throughout the world, in the most demanding industries.

Our technical and operational capabilities are the product of years of experience. Our people, processes and products come together to offer unrivalled service and assurance to our clients.





| | |
|------------|-----------------------------------------------------------------------------------------|
| Project | Raw Water line Los Mina, Santo Domingo Este, Dominican Republic |
| Advantage | 12 m pipe lengths; easy & fast installation |
| Deliveries | 6,100 m of DN 700 & DN 800 GRP pipes, PN 10, GRP elbows and F-pieces with fixed flanges |

TAKING ADVANTAGE OF OUR DESIGNS

AMIBLU INDUSTRIAL



| | |
|------------|-----------------------------------------------------------------------------------------|
| Project | Raw Water line Dunkerque, Hauts-de-France, France |
| Advantage | 12 m pipe lengths; easy & fast installation |
| Deliveries | 6,100 m of DN 700 & DN 800 GRP pipes, PN 10, GRP elbows and F-pieces with fixed flanges |

DO YOU HAVE ANY QUESTION?

WE CAN HELP YOU

The Saudi Arabian Amiblu Company (Amiblu) was established in 1968 in Dammam in the Kingdom of Saudi Arabia to manufacture pipes for the local market. Since then, Amiblu has grown and developed into a major diversified industrial group with operations spanning the globe. Our worldwide presence means that we can serve you better - where you are. Find your local Amiblu representative at www.amiblu.com.

AMIBLU SERVICE TEAM **WORLDWIDE**

info@amiblu.com
www.amiblu.com





TODAY AND EVERYDAY MAKING THE WORLD A LITTLE BIT BETTER. Amiblu believes that the world's need for infrastructure can be solved with innovation, research and excellence. At Amiblu we want to contribute to a more sustainable world. We do so by cutting edge technology through better research.

Distributed by

Amiblu Technology AS

Østre Kullerød 3
3241 Sandefjord
Norway
T: + 47 971 00 300
info@amiblu.com
www.amiblu.com

Amiblu Holding GmbH

European Headquarters
Pischeldorfer Str. 128
9020 Klagenfurt, Austria
T: + 43 463 48 24 24
info@amiblu.com
www.amiblu.com

DISCLAIMER This brochure is intended as a presentation only. Amiblu has separate handbooks and manuals for engineering and installing Amiblu products, which should be used for such purposes. All values listed in the product specifications are nominal. Unsatisfactory product results or applications may occur due to environmental fluctuations, variations in operating procedures, or interpolation of data. We highly recommend that all personnel using this data have specialized training and expertise in the application of the products and their normal installation and operating conditions as well as any particular requirements and the degree of care required for product installation or service. Amiblu does its utmost to ensure that all technical information, data and recommendations are based upon good research and our wealth of experience. We provide the data in this brochure in good faith, and, as such, accept no liability, and will not be held liable, for any losses or damage which may result from the installation or use of any products listed in this brochure. Amiblu companies reserve the right to revise, delete or make obsolete any data and product featured in this brochure without prior notice. We welcome comments regarding this brochure.